

Connect & Refresh

2022 Annual Research Retreat

Thursday, August 11
Pomerene Hall



**THE OHIO STATE
UNIVERSITY**

TRANSLATIONAL DATA
ANALYTICS INSTITUTE

AUTUMN ATTRACTIONS

TDAI Tuesdays

Every Tuesday | 350 Pomerene

Caffeine served with a side of staff office hours, themed discussions, mini clinics, and more

September Schedule

Sept. 6, 10-11 a.m.

Caffeine Chat with Colleagues
Drop-in networking

Sept. 13, 9:30-10:30 a.m.

Discussion led by Amy Schmitz (Law): "Making classes more interdisciplinary"

Sept. 20, 10-11 a.m.

Community of Practice Chat:
Computational Health & Life Sciences

Sept. 27, 10-11 a.m.

Pilot Award Info Session

Watch the TDAI Quick Bits for future schedule details.

Speaker Sessions •
Research Posters • Networking

Interdisciplinary Research Fall Forum

Nov. 7-9

Pomerene Hall

*Co-Hosted by TDAI and the
Sustainability Institute*

Interdisciplinary Research Pilot
Awards info session:
Nov. 7, 11:30 a.m.-1:30 p.m.

Interdisciplinary Research Pilot Award RFP

Nov. 1

tdai.osu.edu/research-awards



Retreat Program Contents

Directors' Slide Deck.....pp. 4-13

Directory Pages

- Institute Faculty Director & Staff.....p. 14
- Communities of Practice Directors.....pp. 15-16
- Core Faculty.....pp. 17-20
- Affiliate Faculty.....pp. 20-25

Note Pages.....pp. 26-31

Retreat Agenda

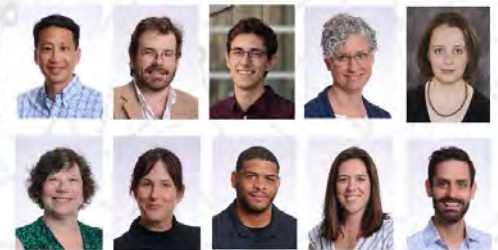
- Welcome - Room 350
- Celebrating 2021-22
- Introducing Staff & Services
- Looking Forward
- Networking Part 1 - Room 301
- Networking Part 2 - Room 320

Our TDAI Community

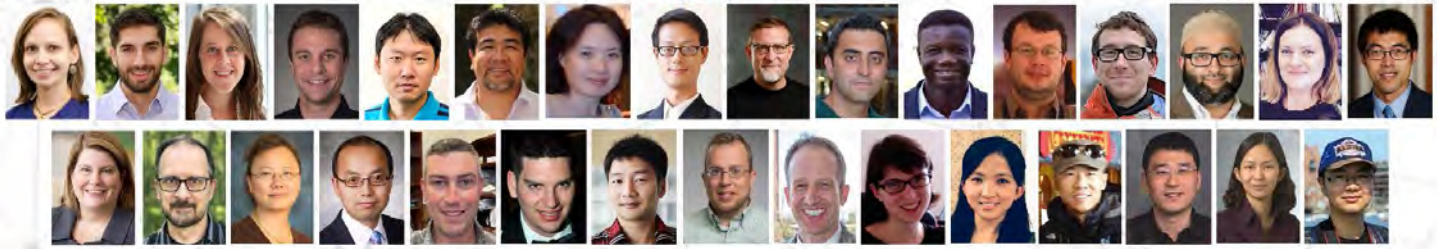
FACULTY LEADERSHIP



STAFF



CORE FACULTY



~plus~

FACULTY AFFILIATES, POSTDOCS, RESEARCH STAFF, STUDENTS, and INTERNAL AND EXTERNAL COLLABORATORS





Core Faculty Promotions and Tenure

➤ Promoted to Associate Professor



Lo-Bin Chang
Statistics



Barbara Kowalczyk
Food Science & Technology



Huan Sun
Computer Science & Engineering



Lei Wang
Civil, Environmental &
Geodetic Engineering

➤ Promoted to Professor



Kaifeng Jiang
Management & Human
Resources

Research Award Recipients

Differentiating Robustness of Cancer Diagnosis by Personality-Aware Intelligent Environment



Jian Chen, PI, Computer Science & Engineering
Anil Parwani, Pathology
Raghu Ramnath, Computer Science & Engineering,
Biomedical Informatics
Dhabaleswar K. Panda, Computer Science & Engineering
Rajiv Ramnath, Computer Science and Engineering
Jeremy Wolfe, Ophthalmology (Harvard)

Development of novel chemical tools for controlling mosquitoes using artificial intelligence



Xiaolin Cheng, PI, Medicinal Chemistry and
Pharmacognosy
Peter Piermarini, Entomology
Liva Rakotondraib, Medicinal Chemistry and
Pharmacognosy

Built Environmental Features and Teen Driving Safety



Jingzhen Yang, PI, Pediatrics, Epidemiology
Harvey Miller, Geography
Yang Wang, Computer Science & Engineering

Quantitative methods for evaluation of virtual reality experiences



Mario Peruggia, PI, Statistics, Psychology
Shadrick Addy, Design, ACCAD
Deborah Kunkel, Mathematical and Statistical
Sciences (Clemson)

Labs in Residence

Symbiotic Healthcare Design Laboratory



Courtney Hebert
(Biomed Info, Epidemiology)



Mike Rayo
(Integrated Sys Eng; Health & Rehab Sci; TDAI Core Faculty)

Pomerene IoT Data Security Living Lab



Matt Lewis
(Design; TDAI Core Faculty)



Kannan Athreya
(Comp Sci & Eng)

Applied Business Data Ethics



Dennis Hirsch
(Law; TDAI Core Faculty)



Aravind Chandrasekaran
(Business)

Open Verbal Autopsy



Sam Clark
(Sociology; TDAI Core Faculty)



Anish Arora
(Comp Sci & Eng)



Rajiv Ramnath
(Comp Sci & Eng)

Large Interdisciplinary Awards



Dhabaleswar K. Panda

ICICLE

*AI Institute for
Intelligent Cyberinfrastructure
with Computational Learning
in the Environment*



Ness Shroff

AI-EDGE

*AI Institute for
Future Edge Networks
and Distributed Intelligence*



Darren Drewry

COALESCE

*Cyber-Physical Systems Frontier
COntext Aware Learning for
Sustainable CybEr-agricultural systems*



Lang Li

*Maternal and Pediatric
Precision in Therapeutics
Data, Model, Knowledge and Research
Coordination Center*



Tanya Berger-Wolf

**Imageomics
HDR Institute**

*A new frontier of biological information
powered by
knowledge guided machine learning*



2021-22 News



Darren Drewry
Food, Agriculture &
Biological Engineering

NSF/NIFA grant to advance
plant-level modeling for
ultra-precision agriculture



Macarius Donneyong
Pharmacy Practice & Science,
Health Services Management & Policy

Study of patient-clinician relationships and
consistent medication use among black adults
Elected to ACE Board of Directors



Rongjun Qin
Civil, Environmental & Geodetic Eng.,
Elec. & Computer Eng.

Honored for research in
geospatial data analytics
Team wins award at ISPRS



Barbara Kowalczyk
Food Science & Technology
Appointed chair of FDA
Science Board



Yingbin Liang
Electrical & Computer Engineering
Awarded NSF RINGS grant
for NextG UAV network



Ping Zhang
Computer Science & Engineering,
Biomedical Informatics
Awarded NSF CAREER
Grant



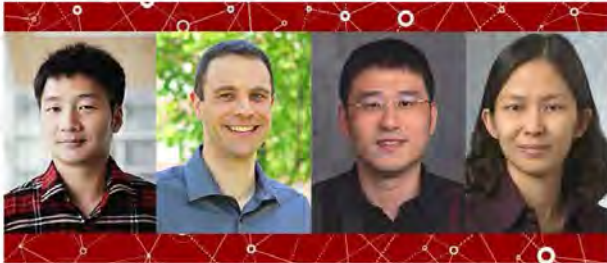
Yu Su
Computer Science
& Engineering

Huan Sun
Computer Science
& Engineering

Team a top performer
in inaugural Alex Prize
TaskBot Challenge

2021-22 News

Distinguished Faculty Awards



Rongjun Qin

Civil, Environmental & Geodetic Engineering, Electrical & Computer Engineering

André Carrel

Civil, Environmental & Geodetic Engineering

Ping Zhang

Computer Science & Engineering, Biomedical Informatics

Xinmiao Zhang

Electrical & Computer Engineering



Zhiqiang Lin

Computer Science & Engineering

Google/Apples's contact-tracing apps susceptible to digital attacks: Researchers find way to fix privacy law

Anish Arora

Computer Science & Engineering



Mike Rayo

Integrated Systems Engineering

Lab's interdisciplinary approach improved Code Blue response times



Laura Pomeroy

Environmental Health Sciences

Receives Excellence in Teaching Award



Caroline Wagner

Milton & Roslyn Wolf Chair in International Affairs, John Glenn College of Public Affairs

Analysis suggests China has passed U.S. using new measurement method



Christopher Stewart

Computer Science & Engineering

Machine Learning helps determine health of soybean fields



Kaifeng Jiang

Management & Human Resources

Study: Workplace environment is one key to retention



Dennis Hirsch

Law

Presents on AI governance at IAPP

Did we miss your news this year? Email your items to us and we'll feature them on the TDAI website! Tdai-news@osu.edu

Research Support Services (pt. 1)

Connecting collaborators

- Seminars and hosted speakers
- Communities of practice
- Networking activities
- Workshop design and hosting
- Faculty and student exchange (w/ Nagoya University)



Consulting

Data services

- Data workflow design
- Data wrangling
- Data exploration/discovery
- Data analysis
- Data visualization
- Manuscript writing

Resources for research

- Dataset discovery
- Data-infrastructure (storage, management, sharing, security)
- Cyber-infrastructure (e.g., OSC, AWS, Azure)

Proposal development

- Data management planning
- Education/Broadening Participation
- Broadening Impact

Curriculum development





Research Support Services (pt. 2)

Direct support for research projects

- Seed grants
- Data storage and sharing
- Labs in residence awards
- Workshop/conference design and hosting
- Post-award staff support: start-up or longer-term (e.g., project management, data infrastructure, communications, finance)
- Broadening Participation programming (e.g., summer camp)
- Masters in Translational Data Analytics (MTDA) capstone projects
- Funding for proposal development (w/ Sustainability Institute and Byrd Polar and Climate Research Center)

Training

- Bootcamps and tutorials (e.g., R, Python, SQL, OpenRefine)
- Consulting experience for postdocs and graduate students
- Postdoctoral Fellowships (w/ Kirwan Institute, Global Arts & Humanities Discovery Theme)
- Graduate fellowships (e.g., Glenn College's Battelle Center for Science, Engineering and Public Policy)

Strategic Directions in Research



Foundations of AI & ML

AI and HDR Institutes
Cyberinfrastructure
Human-Machine Learning



Responsible Data Science

Race and Data
Data Ethics
Data Governance
Public Policy Decision-Making
Public Interest Technology



AI & Healthcare

Clinical Diagnostic and Decision-Making Tools
Computer-Aided Drug Design and Discovery
Precision Nutrition



Environment & Sustainability

Climate
Remote Sensing
Human-Natural Systems
Rural-Urban Systems
Engie Partnership



Smart Mobility

Smart Cities
Smart Campus
Urban Analytics

Catalyzing Convergence: Interdisciplinary Research Enabling Initiative

PARTNERS	1	2	3	4	5
Byrd Polar and Climate Research Center	x	x			
Center for Cancer Engineering	x				
Center for Clinical and Translational Science	x			x	
Center of Microbiome Science - <i>New</i>					x
Center for Urban and Regional Analysis	x				
College of Medicine Dept. of Biomedical Informatics	x				
Foods for Health - <i>New</i>	x			x	
Infectious Diseases Institute					x
Glenn College – Battelle Center	x		x		
Glenn College – CHRR - <i>New</i>					x
Global Arts and Humanities Discovery Theme			x		
Kirwan Institute for the Study of Race and Ethnicity			x		
Sustainability Institute	x	x		x	
Translational Data Analytics Institute	x	x	x	x	x

Activities thus far

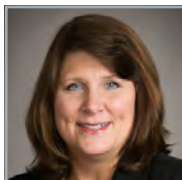
1. Funding and in-kind support for interdisciplinary research pilots
2. Support for interdisciplinary extramural proposal development
3. Interdisciplinary postdoc or student fellowships
4. Convening activities
5. Exploring possibilities

TDAI Directory • Faculty Director and Staff



Dr. Tanya Berger-Wolf
TDAI Faculty Director
Professor, Computer Science and Engineering
Electrical and Computer Engineering
Evolution, Ecology, and Organismal Biology
Director, Imageomics Institute (NSF HDR DIRSE)

Staff



Dr. Cathie Smith, MBA
Managing Director



Andrew Jones
Events and Space Coordinator



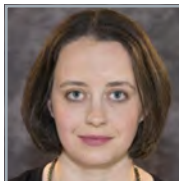
Steve Chang
Research Engineer



Dr. Emily Nutwell
Masters in Translational Data Analytics
Program Director



Dr. Alex Davis
Data Scientist



Amber Pasternak, MA
Education & Outreach Program Coordinator



Pamela Faust, MA
Community Building & Events Program Coordinator



Josh Roush, M.Ed
Business Manager



Jenny Grabmeier, MA
Research Strategist & Facilitator



Matthew Walker
Research Data Science Specialist



Amanda Jovanovich, MBA
Project Manager & Assistant to Dr. Berger-Wolf

Coming Soon

Harshavardhan Bhat, Race & Responsible Data Science Postdoc
Paige Kelly, Race, Public Affairs & Data Postdoc
Brett Zhener, Arts & Data Postdoc

TDAI Communities of Practice convene Ohio State researchers with diverse specialties to collaborate on team science and create translational solutions for complex, socially significant challenges. Spearheaded by members of the institute's leadership team, TDAI's communities of practice conduct transdisciplinary research; identify and pursue funding and publishing opportunities that advance their research agenda; and forge partnerships with industry and community organizations that are similarly committed to contributing to the greater good.

Computational Health & Life Sciences



Xiaolin Cheng
Associate Professor
*Medicinal Chemistry
& Pharmacognosy*



Xia Ning
Associate Professor
*Biomedical
Informatics,
Computer Science
& Engineering*



Laura Pomeroy
Assistant Professor
*Environmental Health
Sciences*

Computational Social Science



Bear Braumoeller
Baranov and
Timashev Chair in
Data Analytics
Political Science



Sean Downey
Associate Professor
Anthropology



William Minozzi
Professor
Political Science

**Foundations of
Data Science & AI**



Raef Bassily
Assistant
Professor
*Computer Science
& Engineering*



Eric Fosler-Lussier
Professor
*Computer Science
& Engineering,
Biomedical
Informatics,
Linguistics*



Subhadeep Paul
Assistant Professor
Statistics

**Responsible
Data Science**



Dennis Hirsch
Professor
Law



**Srinivasan
Parthasarathy**
Professor
*Computer Science
& Engineering*



Amy Schmitz
Professor
Law

Sensing-Driven Collaborative Science



Gil Bohrer
Professor
*Civil, Environmental
& Geodetic
Engineering*



Rajiv Ramnath
Professor of
Practice
*Computer Science
& Engineering*

TDAI Directory • Core Faculty



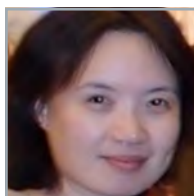
Dena Asta
Assistant
Professor
Statistics



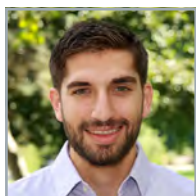
Andreas Chavez
Assistant
Professor
*Evolution, Ecology
& Organismal
Biology*



Raef Bassily
Assistant
Professor
*Computer Science
& Engineering*



Jian Chen
Associate
Professor
*Computer Science
& Engineering*



Joseph Bayer
Assistant
Professor
Communications



Xiaolin Cheng
Associate
Professor
*Pharmacy
Medicinal
Chemistry*



Tanya Berger-Wolf
Professor
*Computer Science
& Engineering,
Evolution, Ecology &
Organismal Biology,
Electrical & Computer
Engineering*



Bryan Choi
Associate
Professor
*Law, Computer
Science
& Engineering*



Elizabeth Bond
Associate
Professor
History



André Carrel
Assistant
Professor
*Civil, Environmental
& Geodetic
Engineering,
Architecture*



Lo-Bin Chang
Associate
Professor
Statistics



Samuel Davanloo
Assistant
Professor
*Integrated
Systems
Engineering*

TDAI Directory • Core Faculty



Macarius Donneyong
Assistant Professor
Pharmacy Practice & Sci., Health Services Mgmt. & Policy



Kaifeng Jiang
Professor
Management & Human Resources



Darren Drewry
Assistant Professor
Food, Agriculture & Biological Engineering



Barbara Kowalczyk
Associate Professor
Food Science & Technology



Dennis Hirsch
Professor
Law



Matthew Lewis
Assistant Professor
Design, Advanced Computing Center for the Arts & Design



James Hood
Assistant Professor
Evolution, Ecology & Organismal Biology



Yingbin Liang
Professor
Electrical & Computer Engineering



Samuel Clark
Professor
Sociology



Ayaz Hyder
Assistant Professor
Environmental Health Sciences



Marta Jarzyna
Assistant Professor
Evolution, Ecology & Organismal Biology



David Melamed
Associate Professor
Sociology

TDAI Directory • Core Faculty



Dustin Mixon
Associate
Professor
Mathematics



Steven Quiring
Professor
Geography



Xia Ning
Associate
Professor
*Biomedical
Informatics,
Computer Science
& Engineering*



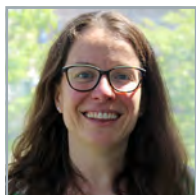
Michael Rayo
Assistant
Professor
*Integrated
Systems
Engineering*



Subhadeep Paul
Assistant
Professor
Statistics



Jennifer Sinnott
Associate
Professor
Statistics



Laura Pomeroy
Assistant
Professor
*Environmental
Health Sciences,
Veterinary
Preventative
Medicine*



Huan Sun
Associate
Professor
*Computer Science
& Engineering*



Zhiqiang Lin
Professor
*Computer Science
& Engineering*



Lei Wang
Associate
Professor
*Civil,
Environmental &
Geodetic
Engineering*

TDAI Directory • Core Faculty



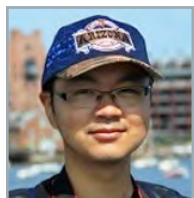
Rongjun Qin
Associate
Professor
*Civil,
Environmental &
Geodetic Eng.,
Electrical &
Computer Eng.*



Ping Zhang
Assistant
Professor
*Biomedical
Informatics,
Computer Science
& Engineering*



Xinmiao Zhang
Associate
Professor
*Electrical &
Computer
Engineering*



Yuan Zhang
Assistant
Professor
Statistics

TDAI Directory • Affiliated Faculty

Shadrick Addy, Assistant Professor

*Design, Advanced Computer Center
for the Arts & Design*

Qadeer Ahmed, Research Associate Professor

*Mechanical & Aerospace Engineering,
Center for Automotive Research*

Theodore Allen, Associate Professor

*Computer Science & Engineering,
Integrated Systems Engineering*

Kellie Archer, Professor

Biostatistics

Anish Arora, Professor

Computer Science & Engineering

Syedah Zahra Atiq, Clinical Assistant Professor

Computer Science & Engineering

Chris Atkinson, Professor

*Mechanical & Aerospace Engineering;
Director, Smart Mobility Initiative*

Christopher Bartlett, Associate Professor

Medicine/Pediatrics

Nora M. Bello, Professor

Animal Sciences

Harmony Bench, Associate Professor

Dance

Elliot Bendoly, Professor

*Operations & Business Analytics,
Management Sciences*

Alison Bennett, Assistant Professor

Evolution, Ecology & Organismal Biology

Thomas Bihari, Associate Professor of Practice

Computer Science & Engineering

Spyros Blanas, Associate Professor

Computer Science & Engineering

Robert Bond, Associate Professor

Communication

Janet Box-Steffensmeier, Dist. Univ. Professor

Political Science

Patrick Bradley, Assistant Professor

Microbiology

Christopher Browning , Professor	<i>Sociology</i>
Alicia Bunger , Professor	<i>Social Work</i>
Gerald Carter , Assistant Professor	<i>Evolution, Ecology & Organismal Biology</i>
John Casterline , Professor	<i>Sociology</i>
Aravind Chandrasekaran , Assoc. Dean	<i>Grad Programs & Executive Education</i>
Wei-Lun Chao , Assistant Professor	<i>Computer Science & Engineering</i>
Ajit Chaudhari , Professor	<i>Health & Rehabilitation Science Physical Therapy</i>
Chen Chen , Summer Associate	<i>Mathematics</i>
Chi-Chih Chen , Research Associate Professor	<i>Electrical & Computer Engineering</i>
James Chen , Associate Professor of Practice	<i>FGP IM Medical Oncology</i>
Oksana Chkrebti , Associate Professor	<i>Statistics</i>
Dongjun Chung , Associate Professor	<i>Biomedical Informatics</i>
Cynthia Colen , Associate Professor	<i>Sociology, Health Behavior & Health Promotion</i>
Andrea Contigiani , Assistant Professor	<i>Management & Human Resources</i>
Jason Coronel , Assistant Professor	<i>Communication</i>
Nathan Craig , Associate Professor	<i>Management Sciences, Operations & Business Analytics</i>
Peter Craigmile , Professor	<i>Statistics</i>
Skyler Cranmer , Professor	<i>Political Science</i>
Paul De Boeck , Professor	<i>Psychology</i>
Isil Erel , Professor, David A. Rismiller Chair	<i>Finance</i>
Emre Ertin , Associate Professor	<i>Electrical & Computer Engineering</i>
Harley Etienne , Associate Professor	<i>Engineering, Architecture</i>
Nancy Ettlinger , Professor	<i>Geography</i>
Naleef Fareed , Assistant Professor	<i>Biomedical Informatics</i>
Eileen Faulds , Assistant Professor/Nurse Pract.	<i>Nursing</i>
Julie Field , Associate Professor	<i>Anthropology</i>
Angus Fletcher , Professor	<i>English</i>
John Fulton , Professor	<i>Food, Agri. & Biological Engineering</i>
Dorinda Gallant , Associate Professor & Academic Director	<i>Educational Studies, Diversity & Inclusion, Ed. & Human Ecol.</i>
Raymond Gao , Associate Professor	<i>Ophthalmology</i>
Rebecca Garabed , Professor	<i>Veterinary Medicine, Epidemiology</i>
Jared Gardner , Professor/Humanities Inst. Dir.	<i>English</i>
Daniel Gingerich , Assistant Professor	<i>Civil, Environmental & Geodetic Engineering, Integrated Systems Eng.</i>
John Gray , Professor	<i>Management Sciences, Operations & Business Analytics</i>

Ralph Greco , Senior Lecturer	<i>Operations & Business Analytics</i>
Dorota Grejner-Brzezinska , Vice President	<i>Enterprise for Research, Innovation & Knowledge</i>
Michael Groeber , Associate Professor	<i>Integrated Systems Engineering, Mechanical & Aerospace Engineering, Materials Science & Engineering</i>
Abhishek Gupta , Assistant Professor	<i>Electrical & Computer Engineering</i>
Jeffrey Haase , Associate Professor	<i>Design</i>
Ian Hamilton , Professor	<i>Mathematics, Evolution, Ecology & Organismal Biology</i>
Renzhi Han , Professor	<i>Surgery - Cardiac</i>
Yousef Hannawi , Clinical Associate Professor	<i>Neurology</i>
Christopher Hans , Associate Professor	<i>Statistics</i>
Curtis Haugtvedt , Associate Professor	<i>Marketing & Logistics, Psychology</i>
Joshua Hawley , Professor	<i>Glenn College, Center for Human Resource Research</i>
Dana Haynie , Professor	<i>Sociology</i>
Courtney Hebert , Clinical Associate Professor	<i>Biomedical Informatics, Infectious Diseases, Epidemiology</i>
Radu Herbei , Professor	<i>Statistics</i>
Dana Howard , Assistant Professor	<i>Biomedical Education & Anatomy</i>
Casey Hoy , Associate Professor	<i>Entomology</i>
Martijn IJtsma , Assistant Professor	<i>Integrated Systems Engineering, Mechanical & Aerospace Engineering</i>
Obiajulu Iwenofu , Clinical Professor	<i>Pathology</i>
Jonathan Jacobs , Assistant Professor	<i>Plant Pathology</i>
Sissy Jhiang , Professor	<i>Internal Medicine, Veterinary Biosciences</i>
Michelle Johnson-Motoyama , Professor	<i>Social Work</i>
Lauren Jones , Associate Professor	<i>Human Sciences Administration, Family & Consumer Sciences, Public Affairs</i>
Joshua Joseph , Clinical Assistant Professor	<i>Internal Medicine Endocrinology, Diabetes & Metabolism</i>
Igor Jouline , Professor	<i>Microbiology</i>
Laura Justice , Professor Director	<i>Educational Studies Administration, Crane Center for Early Childhood</i>
Matthew Kahle , Professor	<i>Mathematics</i>
Elly Kaizar , Professor	<i>Statistics</i>
Eric Katz , Associate Professor	<i>Mathematics</i>
Eben Kenah , Associate Professor	<i>Biostatistics</i>
Sami Khanal , Assistant Professor	<i>Food, Agricultural & Biological Engineering</i>

Sangu Kim , Assistant Professor	<i>Veterinary Biosciences</i>
Marianna Klochko , Associate Professor	<i>Sociology</i>
Ching-Chang Ko , Professor	<i>Orthodontics</i>
Vladimir Kogan , Associate Professor	<i>Political Science</i>
Ian Krajbich , Associate Professor	<i>Psychology</i>
Laura Kubatko , Professor	<i>Evolution, Ecology & Organismal Biology</i>
Sebastian Kurtek , Professor	<i>Statistics</i>
David Landsbergen , Associate Professor	<i>Public Affairs</i>
Huyen Le , Assistant Professor	<i>Geography</i>
Kiryung Lee , Assistant Professor	<i>Electrical & Computer Engineering</i>
Yoonkyung Lee , Professor	<i>Statistics</i>
Fabio Leite , Associate Professor	<i>Psychology</i>
Megan LePere-Schloop , Assistant Professor	<i>Public Affairs</i>
David Liebner , Associate Professor	<i>Oncology</i>
Shili Lin , Professor	<i>Statistics, Biostatistics</i>
Desheng Liu , Professor	<i>Geography, Statistics</i>
Jessica Logan , Assistant Professor	<i>Educational Studies</i>
Linda Lowes , Research Associate Professor	<i>Pediatrics, Neurology, Physical Medicine & Rehabilitation</i>
Bo Lu , Professor	<i>Statistics, Public Health</i>
Qin Ma , Associate Professor	<i>Biomedical Informatics</i>
Steven MacEachern , Professor	<i>Statistics, Psychology</i>
Raghu Machiraju , Professor	<i>Computer Science & Engineering, Pathology, Biomedical Informatics</i>
Andy May , Associate Professor	<i>Civil, Environmental & Geodetic Engineering</i>
Facundo Memoli Techera , Professor	<i>Computer Science & Engineering, Mathematics</i>
Harvey Miller , Professor	<i>Geography</i>
William Minozzi , Professor	<i>Political Science</i>
Golrokh Mirzaei , Assistant Professor	<i>Computer Science & Engineering</i>
Xiaokui Mo , Research Assistant Professor	<i>Biomedical Informatics</i>
Peter Mohler , Vice Dean	<i>Research</i>
Alvaro Montenegro , Associate Professor	<i>Geography</i>
Joachim Moortgat , Associate Professor	<i>Earth Sciences</i>
Mark Moritz , Professor	<i>Anthropology</i>
Yasuyuki Motoyama , Assistant Professor	<i>City & Regional Planning</i>
Waleed Muhanna , Professor	<i>Accounting & Management Information Systems</i>
Parinaz Naghizadeh Ardabili , Assistant Professor	<i>Integrated Systems Engineering</i>

Arnab Nandi , Associate Professor	<i>Computer & Science Engineering</i>
Elizabeth Newton , Director	<i>Materials Science & Engineering</i>
Ai Ni , Assistant Professor	<i>Biostatistics</i>
Ann O'Connell , Professor	<i>Educational Studies</i>
Bradley Okdie , Associate Professor	<i>Psychology</i>
Maria Palazzi , Professor	<i>Design</i>
Xueliang Pan , Clinical Assistant Professor	<i>Biostatistics</i>
Dhabaleswar Panda , Professor	<i>Computer Science & Engineering</i>
Kris Paulsen , Associate Professor	<i>History of Art</i>
Joel Paulson , Assistant Professor	<i>Chemical & Biomolecular Engineering</i>
Jolynn Pek , Associate Professor	<i>Psychology</i>
Andrew Perrault , Assistant Professor	<i>Computer Science & Engineering</i>
Mario Peruggia , Professor	<i>Statistics</i>
Lee Potter , Professor	<i>Electrical & Computer Engineering</i>
Grzegorz Rempala , Professor	<i>Biostatistics</i>
Sheldon Retchin , Professor	<i>Health Services Management & Policy</i>
Virginia Rich , Associate Professor	<i>Microbiology</i>
Amanda Rinehart , Librarian	<i>Data Management</i>
Gretchen Ritter , Executive Dean & Vice Provost	<i>Arts & Sciences</i>
Abdollah Shafieezadeh , Associate Professor	<i>Civil, Environmental & Geodetic Engineering</i>
Daniel Shanahan , Associate Professor	<i>Music Theory & Cognition</i>
Ce Shang , Assistant Professor	<i>Medical Oncology</i>
Scott Shearer , Professor	<i>Food, Agricultural & Biological Engineering</i>
Han-Wei Shen , Professor	<i>Computer Science & Engineering</i>
Ness Shroff , Professor	<i>Computer Science & Engineering</i>
Andrea Sims , Associate Professor	<i>Linguistics</i>
Brian Skinner , Assistant Professor	<i>Physics</i>
Philip Smith , Professor	<i>Integrated Systems Engineering</i>
Daniel Spakowicz , Research Assistant Professor	<i>Molecular Carcinogenesis & Chemoprevention</i>
David Staley , Associate Professor	<i>History</i>
Christopher Stewart , Associate Professor	<i>Computer Science & Engineering</i>
Daniel Stover , Associate Professor	<i>Medical Oncology</i>
Scott Strassels , Research Assistant Professor	<i>Trauma, Critical Care & Burn</i>
Yu Su , Assistant Professor	<i>Computer Science & Engineering</i>
Matthew Sullivan , Professor	<i>Microbiology</i>
Fred Tabung , Assistant Professor	<i>Internal Medicine</i>
Alai Tan , Research Professor	<i>Nursing</i>
Joseph Tien , Professor	<i>Mathematics</i>

Heather Tubbs Cooley, Associate Professor
Asuman Turkmen, Professor
Piers Turner, Associate Professor
Inéz Valdez, Director

Claire Verschraegen, Professor
Vince Vu, Associate Professor
Caroline Wagner, Professor
Zheng Wang, Professor
Director
Keith Warren, Associate Professor
Bryan Weaver, Senior Lecturer
Mark Weir, Associate Professor
Director

Michael White, Professor
Karen Patricia Williams, Professor
Director
Jenessa Winston, Assistant Professor
David Woods, Professor
Kui Xie, Associate Professor
Wei Xu, Assistant Professor
Xinyi Xu, Professor
Aylin Yener, Professor
Andrew Young, Assistant Professor
Seth Young, Associate Professor
Director

Xiaodong Zhang, Professor
Xiaoli Zhang, Research Assistant Professor
Xueru Zhang, Assistant Professor
Hui Zheng, Professor
Jiangjiang Zhu, Associate Professor
Yunzhang Zhu, Associate Professor

Nursing
Statistics
Philosophy, Political Science
Kirwan Institute for the Study of Race & Ethnicity
Medical Oncology
Statistics
Public Policy
Communication
Communication & Psychophysiology Lab
Social Work
Computer Science & Engineering
Public Health
Ecology Epidemiology & Population Health Program, Infectious Disease Institute
Linguistics
Women's Health
Center for Women, Children & Youth
Veterinary Medicine
Integrated Systems Engineering
Educational Studies
Computer Science & Engineering
Statistics
Electrical & Computer Engineering
Surgery
Civil, Environmental & Geodetic Engineering
Center for Aviation Studies
Computer Science & Engineering
Biomedical Informatics
Computer Science & Engineering
Sociology
Human Sciences
Statistics

Notes

Notes

Notes

Notes

Notes

Notes



**THE OHIO STATE
UNIVERSITY**

TRANSLATIONAL DATA
ANALYTICS INSTITUTE

tdai.osu.edu